

Wedding Sampler



Design Count: 63w X 80h stitches

14-count: 4-1/2" w X 5-5/8" h

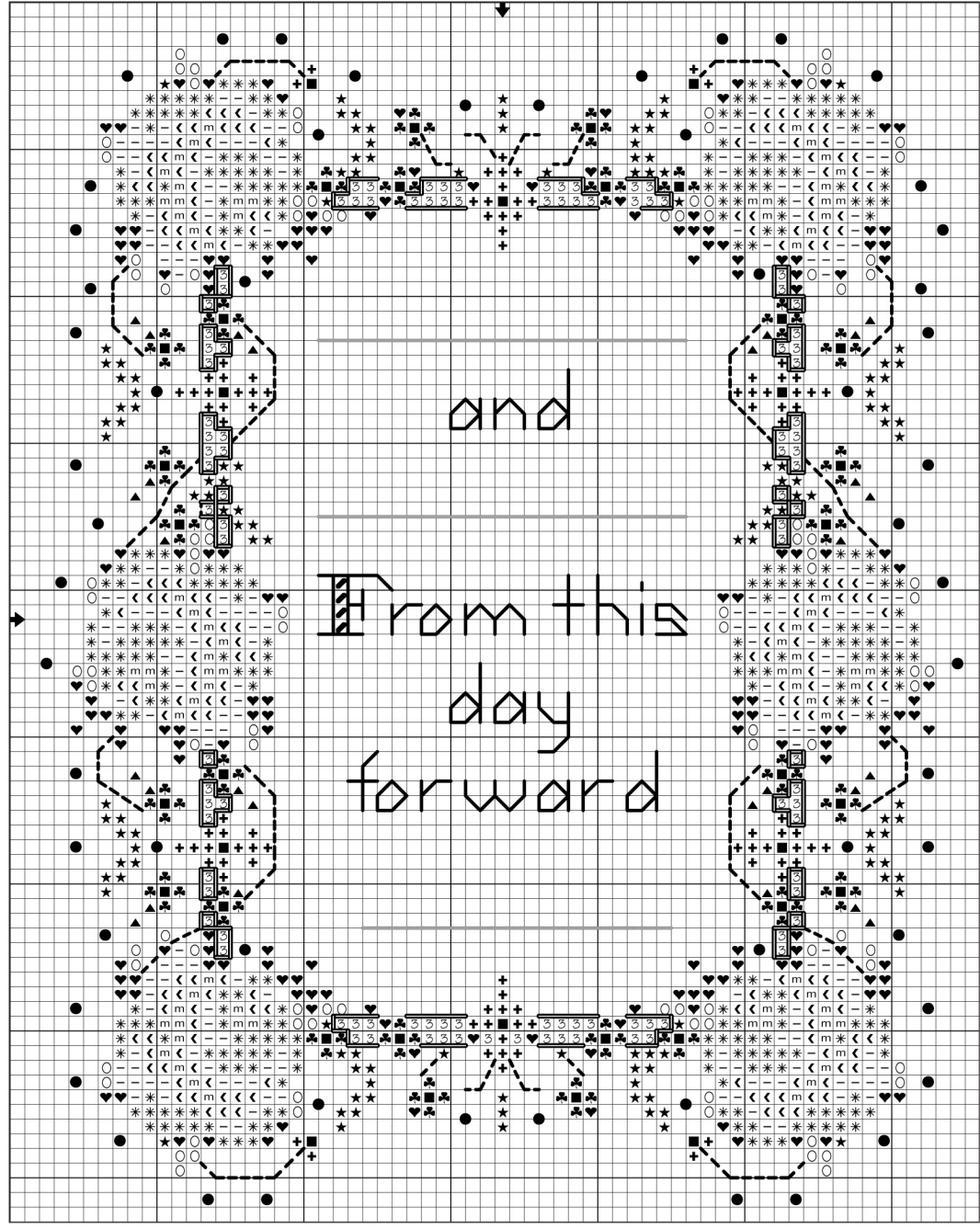
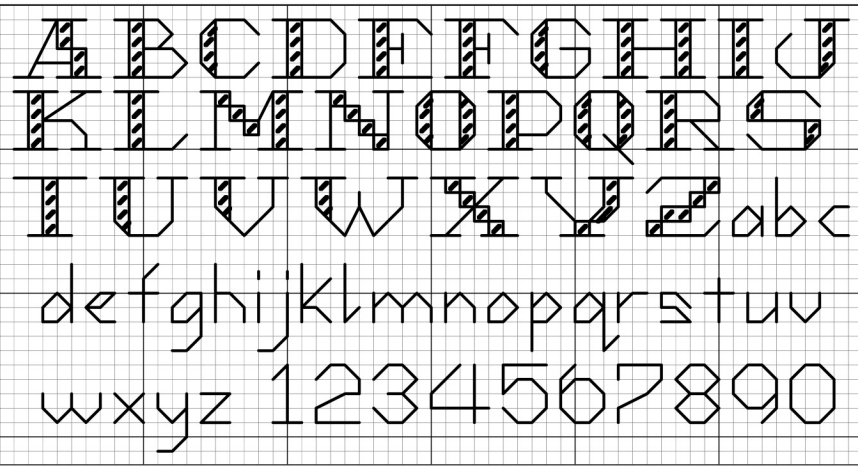
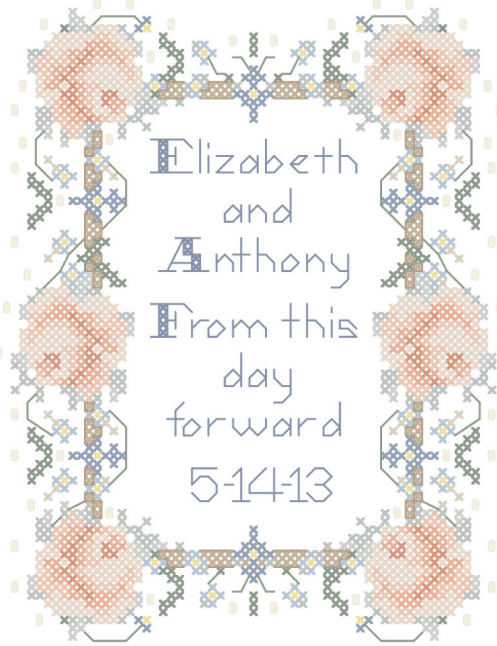
Cross stitch – two ply

DMC	COLOR
* 225	Shell Pink-UL VY LT
● 322	Baby Blue-DK
+ 334	Baby Blue-MD
★ 367	Pistachio Green-DK
▲ 644	Beige Gray-MD
■ 727	Topaz-VY LT
< 760	Salmon
- 761	Salmon-LT
♣ 800	Delft Blue-Pale
3 841	Beige Brown-LT
♥ 927	Gray Green-LT
○ 928	Gray Green-VY LT
m 3328	Salmon-DK

Back stitch – one ply

—	322 Baby Blue-DK
- - -	367 Pistachio Green-DK
○	840 Beige Brown-MD

- 02001 - Mill Hill Pearl Glass Beads (or two ply - 3823 - Very Light Pale Yellow French Knots)



The Janlynn Corporation allows a photocopy / enlargement of this chart for personal use. Selling or distributing copies of this chart is strictly prohibited.